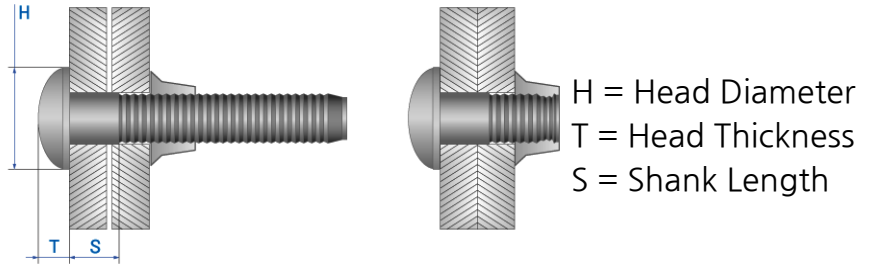


LM Lock Bolt



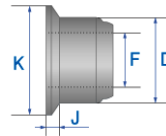
Head Type	Brazier Head
Material	Carbon Steel
Finish	Zinc Plate



*Dimensions in millimeters

Rivet Diameter (D) nom.	Hole Size	Shank Length(S) min.	Grip Range	Head Diameter (H) max.	Head Thickness (T) max.	Standard Strength (kN) typ.	
						Shear	Tensile
4.8	4.8	2.3	1.6~15.9	10.0	3.4	8.2	10.0
		8.4	7.9~31.7				
6.4	6.4	2.2	1.6~15.9	13.3	4.1	11.8	16.0
		9.1	7.9~31.7				

Collar Type	Flange
Material	Carbon Steel
Finish	Zinc Plate



Pin Diameter (D) nom.	F	G	H	J	K
4.8	4.7~5.0	7.7~7.9	6.3~7.2	0.7~1.6	9.1~10.0
6.4	6.5~6.8	10.2~10.4	8.8~9.7	1.1~2.0	12.2~13.2