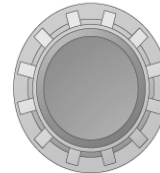
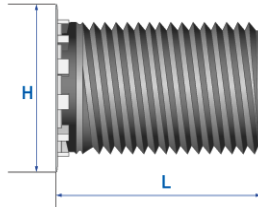


# Clinching Bolt

<b>Head Type / Platform Type</b>	Flush Head / Knurled Platform
<b>Material</b>	Steel
<b>Finish</b>	Zinc Plate



H= Head Diameter  
L = Body Length

\*Dimensions in millimeters

Thread Size	H max.	Hole Size (+0.08)	Sheet Thickness min.	Dist. C/L hole to edge min.	Hole in mating part max.	Tightening Torque(Nm) rec.
M2	3.35	1.96	1.0	4.8	2.6	0.20
M2.5	4.05	2.47	1.0	5.3	3.1	0.41
M3	4.70	2.97	1.0	5.5	3.6	0.84
M3.5	5.30	3.48	1.0	6.4	4.1	1.02
M4	6.00	3.96	1.0	7.0	4.6	1.92
M5	6.70	4.98	1.0	7.0	5.6	3.84
M6	8.20	5.97	1.5	8.0	6.6	8.02
M8	9.90	7.97	2.0	9.5	8.6	13.50

Thread Size	Available Lengths(L)														
	6	8	10	12	14	15	16	18	20						
M2															
M2.5															
M3										25	30				
M3.5										25	30				
M4										25	30				
M5										25	30	40			
M6			8	10	12	14	15	16	18	20	25	30	40	50	60
M8				12	14	15	16	18	20	25	30	40	50	60	